

AGA KHAN UNIVERSITY EXAMINATION BOARD

SECONDARY SCHOOL CERTIFICATE

CLASS IX EXAMINATION

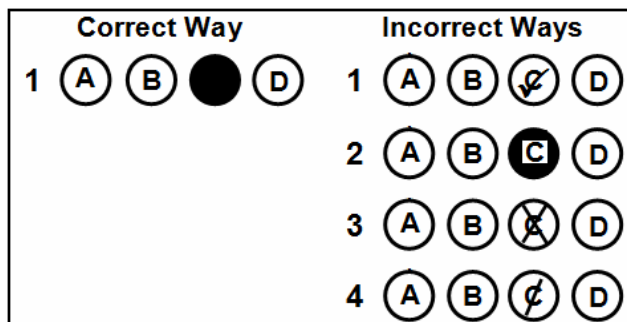
MAY 2014

English Compulsory Paper I

Time: 45 minutes Marks: 25

INSTRUCTIONS

1. Read each question carefully.
2. Answer the questions on the separate answer sheet provided. DO NOT write your answers on the question paper.
3. There are 100 answer numbers on the answer sheet. Use answer numbers 1 to 25 only.
4. In each question there are four choices A, B, C, D. Choose ONE. On the answer grid black out the circle for your choice with a pencil as shown below.



Candidate's Signature

5. If you want to change your answer, ERASE the first answer completely with a rubber, before blacking out a new circle.
6. DO NOT write anything in the answer grid. The computer only records what is in the circles.

Listening Comprehension Section

In this section you will hear two recordings. Each one will be played twice.

Listen carefully to the first recording and then read the questions. You will have two minutes' reading time.

The recording will then be replayed. You can make notes on your question paper.

When the recording has finished, record your answers on your separate answer sheet. You will have three and a half minutes to pencil in your answers.

Follow the instruction on the front page of paper I to show which of the options; A, B, C or D you have selected for each question.

Listening Passage I

The passage is a description of the ice-capped Antarctica.

Source: Adapted from transcripts of National Geographic Channel

Mark your responses to these questions on your multiple choice answer sheet.

1. Which of the following features best describes the world's largest desert?
 - A. It is a very hot place.
 - B. It receives average rainfall.
 - C. It is covered with ice.
 - D. It has a high evaporation rate.

2. Which of the following factors labels an area as a desert?
 - A. The rate of rainfall is very low.
 - B. The temperature remains very high.
 - C. There is scarcity of food.
 - D. Blizzards are a common occurrence.

3. The rate of annual snowfall in Antarctica near the coastline is less than
 - A. 9 inches.
 - B. 2 inches.
 - C. 7 inches.
 - D. 5 inches.

4. Snow-filled winds constantly blow over Antarctica. This phenomenon is referred to by the word
 - A. snowfall.
 - B. evaporation.
 - C. blizzard.
 - D. precipitation.

5. How does the rate of evaporation affect Antarctica?
 - A. The coastline becomes very cold.
 - B. Multiple ice sheets are formed.
 - C. Precipitation rate increases.
 - D. The rate of snowfall increases.

6. Which of the following describes the main idea of the passage?
 - A. Stormy winds are a characteristic feature of Antarctica.
 - B. Deserts have low rates of evaporation and precipitation.
 - C. The weather differs in various regions of Antarctica.
 - D. Antarctica has all the characteristic features of a desert.

PLEASE DO NOT TURN OVER THE PAGE UNTIL YOU ARE TOLD

Now we will play the second recording. It too will be played twice.

Listen carefully to the first playing then open paper one booklet and read the questions. You will have two minutes reading time.

The recording will then be replayed. You can make notes on your question paper.

When the recording has finished, enter your answers on your separate answer sheet. You will have three and a half minutes to pencil in your answers.

Listening Passage II

The passage is a description of the zebras.

Source: 'The Express Tribune'

Mark your responses to these questions on your multiple choice answer sheet.

7. Zebras have striped bodies because it helps them to
 - A. look like other animals.
 - B. resemble the mother zebra.
 - C. mislead their prey.
 - D. escape from predators.

8. A zebra can easily blend into its surroundings because
 - A. its patterns are vertical and subtle.
 - B. lions are colour blind.
 - C. its patterns are similar to tall grasses.
 - D. it is small in size.

9. A lion is least likely to spot a zebra when the zebra is
 - A. moving away from grass.
 - B. overlooking grassy patterns.
 - C. standing still in grassy plains.
 - D. travelling alone.

10. Which of the following qualities of zebra mainly contributes in its protection?
 - A. They look different from one another.
 - B. They live in plains of Africa.
 - C. They run very fast.
 - D. They travel in herds.

11. Zebras identify each other by
 - A. variation in their size.
 - B. their family resemblance.
 - C. shape of their stripes.
 - D. their fingerprint patterns.

12. The stripe-pattern of zebras is compared to which of the following human features?
 - A. Fingerprints
 - B. Family resemblance
 - C. Colour blindness
 - D. Protectiveness

PLEASE DO NOT TURN OVER THE PAGE UNTIL YOU ARE TOLD

Reading Comprehension Section

You have 20 minutes for this section. This section has two reading passages; each followed by multiple choice questions. You are advised to spend approximately 10 minutes on each of the given passages.

Read the passage carefully and then answer the multiple choice questions which follow.

Reading Passage I

I had scarcely passed my twelfth birthday when I entered the inhospitable regions of examinations, through which for the next seven years I was destined to journey. These examinations were a great trial to me. The subjects which were dearest to the examiners were almost invariably those I fancied least. I would have liked to have been examined in history, 5 poetry and writing essays. The examiners, on the other hand, were partial to Latin and mathematics. And their will prevailed. Moreover, the questions which they asked on both these subjects were almost invariably those to which I was unable to suggest a satisfactory answer. I should have liked to be asked to say what I knew. They always tried to ask what I did not know. When I would have willingly displayed my knowledge, they sought to expose my ignorance. This 10 sort of treatment had only one result: I did not do well in examinations.

This was especially true of my Entrance Examination to Harrow. The Headmaster, Mr. Welldon, however, took a broad-minded view of my Latin prose: he showed discernment in judging my general ability. This is more remarkable, because I was found unable to answer a single question in the Latin paper. I wrote my name at the top of the page. I wrote down the 15 number of the question "I". After much reflection I put a bracket around it thus "(I)". But thereafter I could not think of anything connected with it that was either relevant or true. Incidentally, there arrived from nowhere in particular a blot and several smudges. I gazed for two whole hours at this sad spectacle: and then merciful ushers collected my piece of foolscap with all the others and carried it up to the headmaster's table. It was from these slender indications of 20 scholarship that Mr. Welldon drew the conclusion that I was worthy to pass into Harrow. It is very much to his credit. It showed that he was a man capable of looking beneath the surface of things: a man not dependent upon paper manifestations. I have always had the greatest regard for him.

Adapted from 'My Early Life' by Winston Churchill

Mark your responses to these questions on your multiple choice answer sheet.

13. Which word in paragraph 1 indicates that examinations were a less comfortable territory for the author?
- A. Scarcely
 - B. Destined
 - C. Inhospitable
 - D. Invariably
14. The reason that the author gave about why he did not like examinations was that
- A. he did not fancy exams.
 - B. he was unable to suggest satisfactory answers.
 - C. his favourite subjects were not explored.
 - D. his examiners were not fair.
15. In the author's opinion, the examination system usually focuses on
- A. what examiners know.
 - B. paper manifestations.
 - C. what students do not know.
 - D. difficult subjects only.
16. Which of the following indicates that the author was not a bad student?
- I. He expressed an interest in mathematics.
 - II. He wanted to present his knowledge before examiners.
 - III. He was admitted to Harrow.
- A. I only
 - B. I and II
 - C. II and III
 - D. I and III
17. The word 'discernment' in line 12 can be replaced by
- A. curiosity.
 - B. sensitivity.
 - C. open-mindedness.
 - D. acceptance.
18. What did the author feel when the ushers took his paper away?
- A. Gratitude
 - B. Mercy
 - C. Sadness
 - D. Foolishness
19. The author was eventually sent to Harrow because
- A. of his overall performance in all other subjects.
 - B. of his superior intellect in mathematics and Latin.
 - C. the examiner felt pity for him.
 - D. the headmaster looked beyond his performance in exams.

PLEASE TURN OVER THE PAGE

Now read the following passage carefully and answer the questions that follow.

Reading Passage II

The 'Ogre of Bellundur,' about which I am going to tell you, began its career in more or less the usual way, as a very ordinary and inoffensive tiger. It confined its attention to killing and eating spotted deer, and sambar, which swarmed everywhere in those times. Then the government began encouraging programmes of cattle rearing. As rich pasturage abounded, herds of cattle were
5 introduced which multiplied into many thousands within a short period. They replaced wild deer and sambar that previously had grazed undisturbed.

'The Ogre,' as it came to be known later, now made its presence felt by varying its taste for wild game with a liking for prime beef, and this inclination grew rapidly to the exclusion of any other kind of meat. It killed and it ate, and it ate and it killed, till it had accounted for many herds of
10 cattle and the villagers at last began to feel that something should be done.

The villager is a man of unbounded patience, an attribute easier to understand if one observes his complete apathy, his capacity for resignation and for accepting whatever misfortune, it may be the will of God to bestow upon him. So, when I tell you that at last the villagers had had enough of this tiger and were determined to put a stop to its depredations you will realize that the Ogre
15 had really gone too far. They decided to set a trap, catch it and then kill it.

A deep rectangular hole was dug in the centre of a game trail used by the animals; the mouth was carefully concealed by thin interlaced bamboos covered with leaves and twigs, and the bait, in the form of the least valuable calf in the village, was tied to a stake at the farther end of the rectangular pit. A direct approach to the bait from any other direction except across the
20 rectangular pit was made impracticable for the tiger by a vast mass of thorns packed tightly around it on both sides and beyond, leaving only the one approach open. Everything went according to plan and on the third night the tiger fell into the pit.

Taken from 'Tales from the Indian Jungle' by Kenneth Anderson. Rupa and Co.

Mark your responses to these questions on your multiple choice answer sheet.

20. The phrase 'swarmed everywhere' (line 3) means
- A. roamed in abundance.
 - B. grazed throughout.
 - C. left no stone unturned.
 - D. pursued their individual paths.
21. The Ogre of Bellunder was inoffensive till he
- A. started eating sambar.
 - B. grew old and haughty.
 - C. attacked the villagers.
 - D. made cattle his prey.
22. Which of the following in lines 10-15 is an idiomatic expression?
- A. Bestow upon him
 - B. Gone too far
 - C. Set a trap
 - D. To put a stop
23. Usually the villagers are extremely patient as they
- A. believe in fate.
 - B. are complacent.
 - C. are very lazy.
 - D. help each other.
24. The word 'bait' (line 17) is something which is
- A. extremely expensive.
 - B. used to attract prey.
 - C. to be hunted by the hunter.
 - D. for the distraction of animals.
25. Which of the following is CORRECT according to the passage?
- A. The tiger had gone too far when it started killing animals and human beings.
 - B. The calf was tied to the stake two days before the plan succeeded.
 - C. Villagers are simple people who can fight against fate.
 - D. The tiger had three possible ways to approach the bait.

END OF PAPER

Please use this page for rough work

Please use this page for rough work

Please use this page for rough work